



Maud's Museum:

The Next Step



What We Have:

A restored manse

A renovated church

A

National Historic Site



We Also Have:

- Hundreds of Visitors
- Valuable artifacts
- A Garden
- The first bronze life size statue of Lucy Maud Montgomery
- A Community of enthusiasts for our cause
- A dedicated and energetic Board and committee of volunteers
- **A successful 30 years of raising funds, establishing the Historic Site, receiving visitors from all over the world, and raising awareness of the life of an iconic Canadian figure**



What We *Don't* Have:

- Adequate parking for our visitors
- Signage that is coherent and that will lead people to Leaskdale and the National Historic Site
- Display Furnishings and cabinets to house our increasing collections of artifacts that pertain to Lucy Maud Montgomery's life in Leaskdale
- Accessible displays
- Up to date security systems for the Museum
- Lighting and temperature controls to protect artifacts
- A space dedicated to younger visitors to pique their interest and involvement

We need all of the above to become a valid and authoritative Museum, and to meet the needs of our increasing number of visitors.

Parking



In 2018, William Leask donated two acres of land to LMMSO. The property adjoins the Historic Leaskdale Church property to the north and south.

The two acre lot has been surveyed and severed, and the deed has been transferred to The Lucy Maud Montgomery Society. Some clearing and drainage of the property has been completed in preparation for the construction of a new entrance and gravel parking lot to the north of the Historic Leaskdale Church. The plan is to make an entrance off Leaskdale Road. There will be space for approximately 50 cars, and room for tour buses. A landscaped walkway will lead to the church, with outdoor interpretive signage along the way.

Signage

Interpretive panels along the walkway from the parking lot will introduce the history of the hamlet and the community of Leaskdale.

We also envision signs leading to locations significant to the Montgomery story, such as the site of the Leaskdale Public School, the Zephyr Church, and Rainbow Valley.

A wall mural on the exterior of the church is planned.

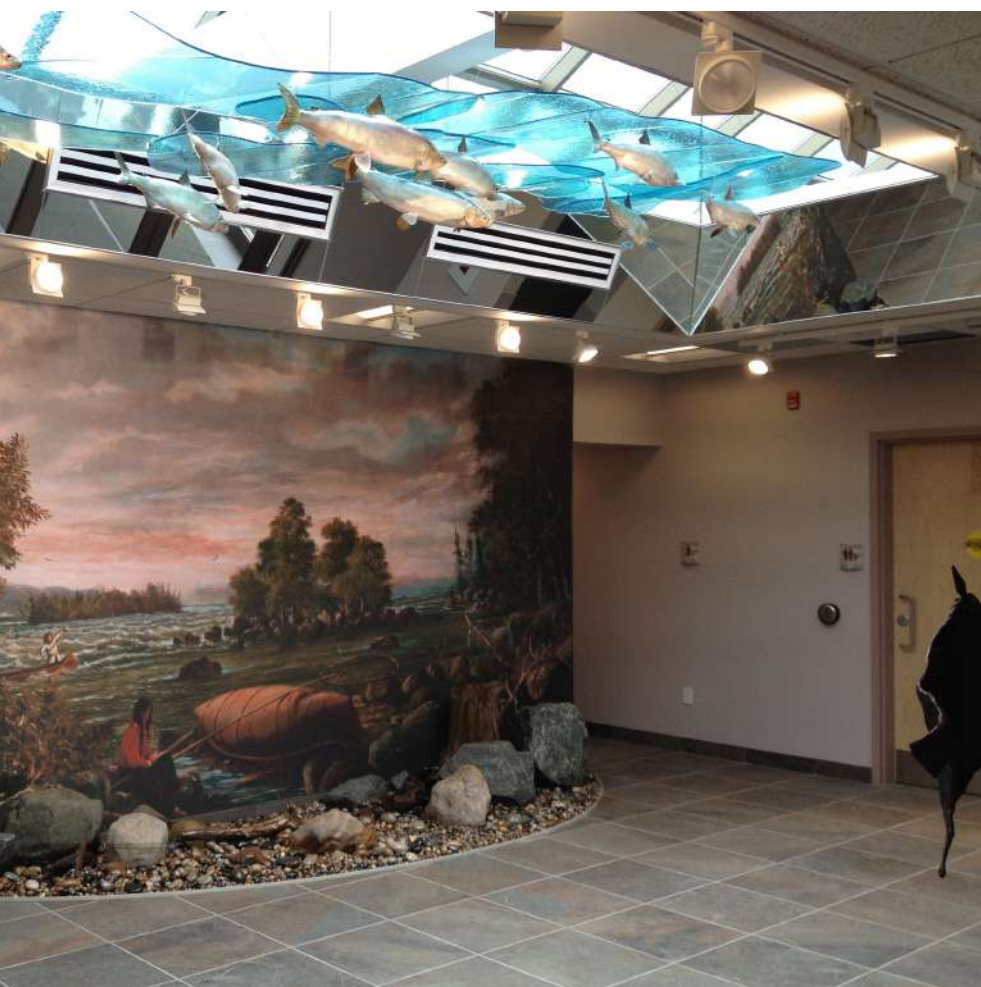
Wayfinding signage will be added to, and upgraded. Currently there is a blue tourist sign on Highway 404 at Bloomington Road, and signs lead from there to Uxbridge, and then Leaskdale. But there is no signage leading from Highway 401 or 407 to bring visitors from the south.

Wayfinding signs at Highway 23 and 12 from both north and south, and in Leaskdale itself, would be helpful.

The Museum

We have drawn up Museum Policies and submitted them to the Ministry of Culture, Tourism and Sport.

“Collection development and management are integral parts of the operation of the Leaskdale Museum. It is an ongoing activity that enables the LMMSO to fulfil its function as a National Historic Site”.



“The LMMSO is committed to managing its collections to ensure the highest level of informational value of the collection as well as the best possible balance of care for and use of the collection The LMMSO is committed to both caring for and documenting as completely as possible, the objects in its collection”.

[Collection Development and Management Policy, The Lucy Maud Montgomery Society of Ontario]

From Our Honorary Campaign Chairs:

“The LMMSO has already made this corner of Ontario come alive with its meticulous Montgomery work; it would be wonderful to see that work take the next needed step: a museum with the credibility and professional care that suggests.” Elizabeth Rollins Epperly, BA, MA, Ph.D, LL.D. past President, UPEI

“ I met LMM enthusiast Wilda Clark (1913-2000) and I was energized by her strong will and her dream that Leaskdale Manse be recognized as a heritage site.... Now I bring Japanese visitors to the Manse every summer, and I introduce to them what I call “Maud’s House of Dreams”....I give thanks to the Lucy Maud Montgomery society of Ontario for maintaining the manse, along with my thanks to Montgomery who left us so many wonderful stories and memories.

I’m now so excited to talk about LMMSO (particularly your new project) this November at Notre Dame Seishin U. in Okayama.” Yuka Kajihara-Nolan, Independent Researcher

“Lucy Maud Montgomery and her novels meant so much to me when I was growing up, and I think her former homestead deserves the honour of being recognized as a world-class museum site. We are lucky to have this important piece of literary history in our beautiful township, and LMM fans for generations should benefit from it, as well.” Lisha Van Nieuwenhove, B.J. Hon. Publisher/Editor, Uxbridge Cosmos

“When I moved to Uxbridge in 1987 and heard about the Lucy Maud Society and attended events at the Church and Lucy Maud’s home I found it so rewarding what the group of women and men were doing to keep Lucy Maud memories alive. I decided then to help the Maud Squad in their endeavours and I am so pleased I did. Well done and thank you to all. “ Bob Kirvan, Director & V P Wood Gundy Stockbroker, retired, Senior of the Year Award Uxbridge 2021

"I have worked with the LMMSO (the Maud Squad) for over 3 decades and I can't think of a more competent, industrious, and energetic volunteer group. My father, Dr. Stuart Macdonald, and L.M. Montgomery's youngest son would often quote Browning to me. 'Ah, but a man's reach should exceed his grasp. Or what's a heaven for?' It would be an understatement to say that the LMMSO have certainly exceeded their grasp". Kate Macdonald Butler, President of The Heirs of L.M. Montgomery

"It is an honour and a privilege to be part of the Lucy Maud Society fundraising campaign". Gerri Lynn O'Connor, Former Mayor of Uxbridge Township, Former Chair of Durham Region

"We came to Uxbridge 25 years ago because of its flourishing arts scene. A jewel in this arts scene is the Lucy Maud Montgomery site, including the museum. Making it a world-class destination will enhance the stature of the whole community, in artistic, cultural and economic terms". Mary Margaret Walters, Friend and Supporter

Painters paint for our eyes, musicians play for our hearts, but writers write to inspire us. In a letter composed decades ago, Lucy Maud Montgomery encouraged us "to improve our surroundings – to measure our happiness by what we can put into our environment..." Maud has given this community and a world of readers classic characters, insights to life and a legacy of her genius. It's fitting, as the beneficiaries of her work and her life among us, that we now step up and ensure that her gifts be preserved in an accredited museum, at the Historic Leaskdale Church. I for one feel inspired by her challenge "to improve our surroundings" for generations to come.

Ted Barris, Author, Journalist, Broadcaster, Lecturer

Maud Squad Launches Major Fundraiser on LMM Day

by Conrad Boyce, Local Journalism Initiative Reporter, Honorary Campaign Chair

There is but one National Historic Site in Uxbridge Township, the Leaskdale Manse, a place that played a key role in the artistic and domestic life of one of the nation's most popular and well-respected authors. The site is not managed by Parks Canada, but by a non-profit society legendary for its accomplishments.

The Lucy Maud Montgomery Society of Ontario (LMMSO) was incorporated in 2004, although predecessor groups had been involved in preserving and promoting the legacy of Montgomery in Leaskdale for decades before that. And over those decades, the LMMSO, or Maud Squad as it is affectionately known, has undertaken a succession of major fundraising efforts to gradually turn the Leaskdale site into a major tourist attraction and faithful tribute to Montgomery. On Saturday, Oct. 28, as part of its annual LMM Day, the group launched yet another campaign, one of its largest to date.

As an example of what this group is capable of, let's take a look at the fall of 2011; by design, it was the centennial of Maud's arrival in Leaskdale, as the new bride of the village's Presbyterian minister, Ewen Macdonald. In 2006, the LMMSO had acquired St. Paul's, the church where Macdonald preached and Maud did everything else, as the congregation moved on to a bigger house of worship up the road. The mortgage was \$200,000, but within five years, the Society paid it off, and the church was well on its way to being



the focal point of the Squad's interpretive and fundraising efforts. The mortgage-burning ceremony took place as part of the LMMSO's first-ever international academic conference. Another event that week was the unveiling of the interior restoration of the Manse to the way it was as Montgomery and her neighbours endured the trials of the First World War. This project required exhaustive research and hundreds of volunteer hours.

As if all this wasn't enough, the LMMSO also debuted that week a play it had commissioned about Montgomery's Leaskdale years. *Maud of Leaskdale*, starring Uxbridge native Jennifer Carroll as Montgomery, takes its script entirely from Montgomery's journals. Over the ensuing dozen years, the play has become the Society's signature interpretive piece, performed annually at the Historic Leaskdale Church but in many other venues as well (including LMM's native Prince Edward Island). Carroll remains the only actor to ever perform the piece, and has portrayed the author at many other events, even serving as the model for Wynn Walters' beautiful sculpture of Maud in the garden beside the church.

The LMMSO's new campaign, also with a target of \$200K, is intended to fund a diversity of projects:

- Design of a new LMMSO logo.

- Design and construction of new signage.

- Exterior displays to entice and interest casual visitors.

- New wall panels and exhibits that interpret Montgomery's life in Leaskdale.

- A refurbished tearoom (the site for many LMMSO events).

- A library and larger gift shop.

- A space devoted to younger visitors, to pique their interest and involvement.

- New display cabinets for the Society's ever growing collection of valuable artifacts, with lighting and security built to current museum standards.

- Renovations to enhance the security of the building and its contents.

- Grading and surfacing the new northern parking lot extension

With help from the community of Uxbridge and beyond, as well as the community of Lucy Maud Montgomery aficionados, scholars, and followers around the globe, there is no doubt the Maud Squad will reach the goals they have set.

THE LUCY MAUD MONTGOMERY SOCIETY OF
ONTARIO PRESENTS...

MAUD OF LEASKDALE

DINNER THEATRE* \$50- AUGUST 24

DINNER 5:30 PM, SHOW 7:30PM

SHOW ONLY \$25

SATURDAY AND SUNDAY SHOWS @ 3PM

STARRING JENNIFER CARROLL
AS MAUD

THIS ONE WOMAN SHOW IS BASED ON
L.M. MONTGOMERY'S JOURNALS AND
HER LIFE IN LEASKDALE.

CALL 905 862 0808 TO BOOK
LUCYMAUDMONTGOMERY.CA

AT THE HISTORIC LEASKDALE
CHURCH, 11850 DURHAM RD.1

L.M. MONTGOMERY IS A TRADEMARK OF THE HEIRS OF
L.M. MONTGOMERY INC. AND IS USED UNDER LICENSE BY
THE LMMSO.



Thursday Dinner Theatre



The one-woman show Maud of Leaskdale is performed in the historic church where Lucy Maud Montgomery's husband once preached. The author moved to the hamlet outside Uxbridge in 1911.
Carys Mills / TORONTO STAR

Our Goals

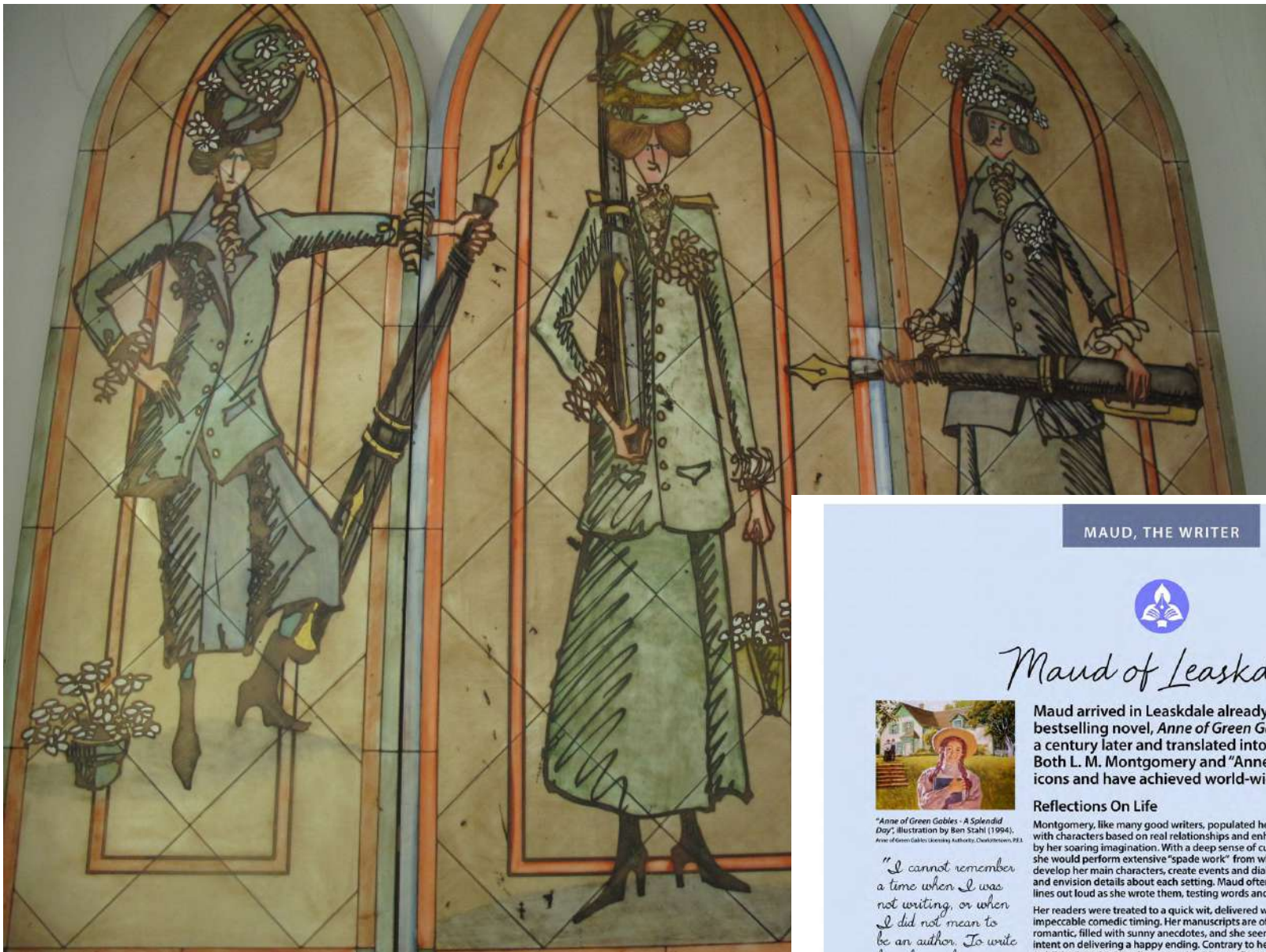
Now that our Museum Policies are complete, we will concentrate on our plans for the physical upgrades to the Historic Leaskdale Church and its surroundings.

We will create:

- **A museum** with modern technical displays, giving public access to the best understanding of the life and work of L.M. Montgomery, while protecting a collection of valuable artifacts.
- **A centre for arts and culture for the community.** We regularly host concerts, plays, weddings, dinners, meetings, workshops, rehearsals, as well as our usual lunches and teas. The Leaskdale Historic Church is already a busy community centre, and activities will increase and expand in coming years. We must look to the future and be prepared.
- **A destination** that will satisfy the need of visitors from around the globe to find out more and appreciate the importance of Lucy Maud Montgomery in the realms of Canadian Literature and culture, and worldwide recognition.
- **Parking accommodation for large numbers** attending special events without adversely impacting the residents of Leaskdale. Presently our visitors have to park on streets throughout the hamlet, to the discomfort and annoyance of our friends and neighbours. A large parking lot with an entrance off Leaskdale Road will ease this situation.

How You Can Help

This is a major fundraising project



to accomplish a significant goal.

MAUD, THE WRITER



Maud of Leaskdale

Maud arrived in Leaskdale already famous for her first bestselling novel, *Anne of Green Gables*, still in print over a century later and translated into over forty languages. Both L. M. Montgomery and "Anne" are beloved Canadian icons and have achieved world-wide fame.

Reflections On Life

Montgomery, like many good writers, populated her stories with characters based on real relationships and enhanced by her soaring imagination. With a deep sense of curiosity, she would perform extensive "spade work" from which she'd develop her main characters, create events and dialogue, and envision details about each setting. Maud often spoke lines out loud as she wrote them, testing words and rhythms.

Her readers were treated to a quick wit, delivered with impeccable comedic timing. Her manuscripts are often romantic, filled with sunny anecdotes, and she seemed intent on delivering a happy ending. Contrary to her published works, Maud's personal writings reflected a darker and more worrisome world that she kept hidden from public view. These deeper, more private thoughts were ritually recorded in her diaries and journals.

"I cannot remember a time when I was not writing, or when I did not mean to be an author. To write has always been my central purpose around which every effort and hope and ambition of my life has grouped itself."

L. M. Montgomery, *Journal* Volume 1, p. 254.

Maud gained inspiration from the scrapbooks she created as "vision boards" for her writing.

Montgomery preferred to use a Waverley pen, with a special nib that turned up, rather than down, to make the ink flow smoothly. Every few lines, she would dip her pen into an inkwell.

Photos of L. M. Montgomery writing courtesy of the Anne of Green Gables Museum (Park Centre, P.E.I.).

A Prolific Writer

Montgomery wrote more than 500 short stories, 21 novels, and 2 poetry collections. Half of her life's literary works were written here at Leaskdale.

Writings as a Leaskdale

- Chronicles of Avonlea (1912)
- The Golden Road (1913)
- Anne of the Island (1915)
- The Watchman and Other Poems (1916)
- Anne's House of Dreams (1917)
- The Alpine Path: The Story of My Career (1917)
- Rainbow Valley (1919)
- Further Chronicles of Avonlea (1920)
- Rilla of Ingleside (1921)
- Emily of New Moon (1923)
- Emily Climbs (1925)
- The Blue Castle (1926)



Maud's Museum – The Next Step

✓**Yes**, I wish to help the Lucy Maud Montgomery Society of Ontario with its museum upgrades

☐ Here's my donation in the amount of \$1000

☐ Here are five post-dated cheques, each in the amount of \$200

☐ Here's my donation in the amount of _____

All donations are very much appreciated. As a token of our appreciation of \$1000 donations, we would like you to have (please check one):

☐ One free rental of the Historic Leaskdale Church for an event

☐ One free tour of the Manse and Church for a group

☐ One free life membership in the Lucy Maud Montgomery Society of Ontario (value \$150)

☐ A Victorian Tea at the Manse for a group of eight

Please indicate your name for donor recognition purposes:

Cheques are payable to the Lucy Maud Montgomery Society and should be mailed to:

Lucy Maud Montgomery Society of Ontario
P.O. Box 84, Leaskdale, ON L0C 1C0

OR

Donate by e-transfer, using the e-mail address mzilawhitfield@gmail.com

OR

Donate with your credit card through PayPal at <https://lucymaudmontgomery.ca>

Thank you for your support!

Charity registration No. 859850034 RR 0001